

N424 Double opening cable management metal fitting

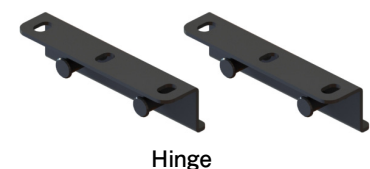


- Possible to customize the covers
- Possible to open to both ways
- Material/Steel
- Finishing/Black baked paint
- Recommended installing screw/Truss 5mm

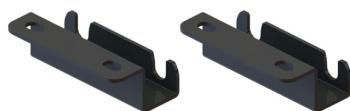


N424-SB Side bracket set

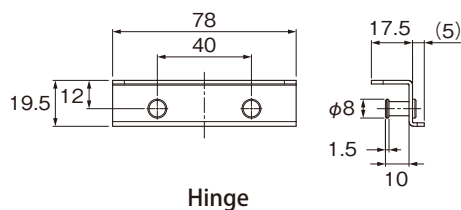
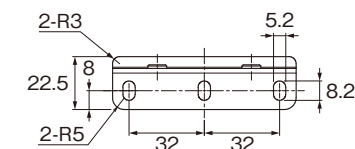
- Set content/Hinge 2 & side bracket 2
- Quantity/100set



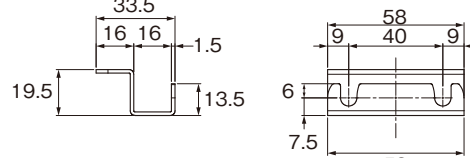
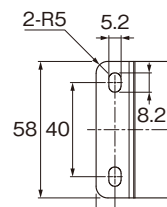
Hinge



Side bracket



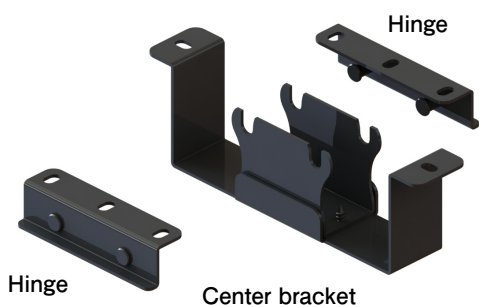
Hinge



Side bracket

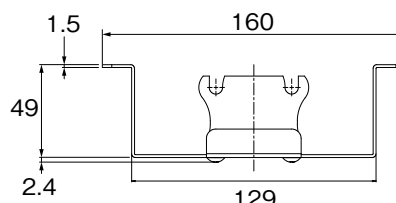
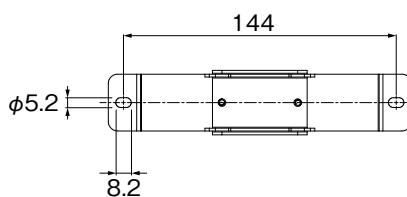
N424-CB Center bracket set

- Set content/ Hinge 2 & Center bracket 1
- Quantity/100set

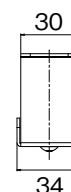


Hinge

Center bracket



Center bracket



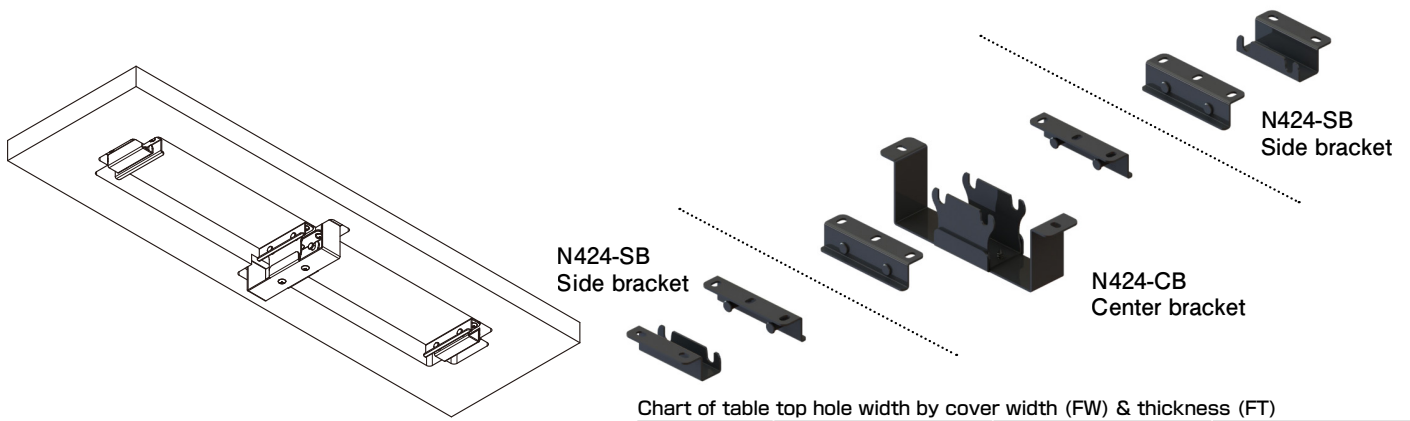
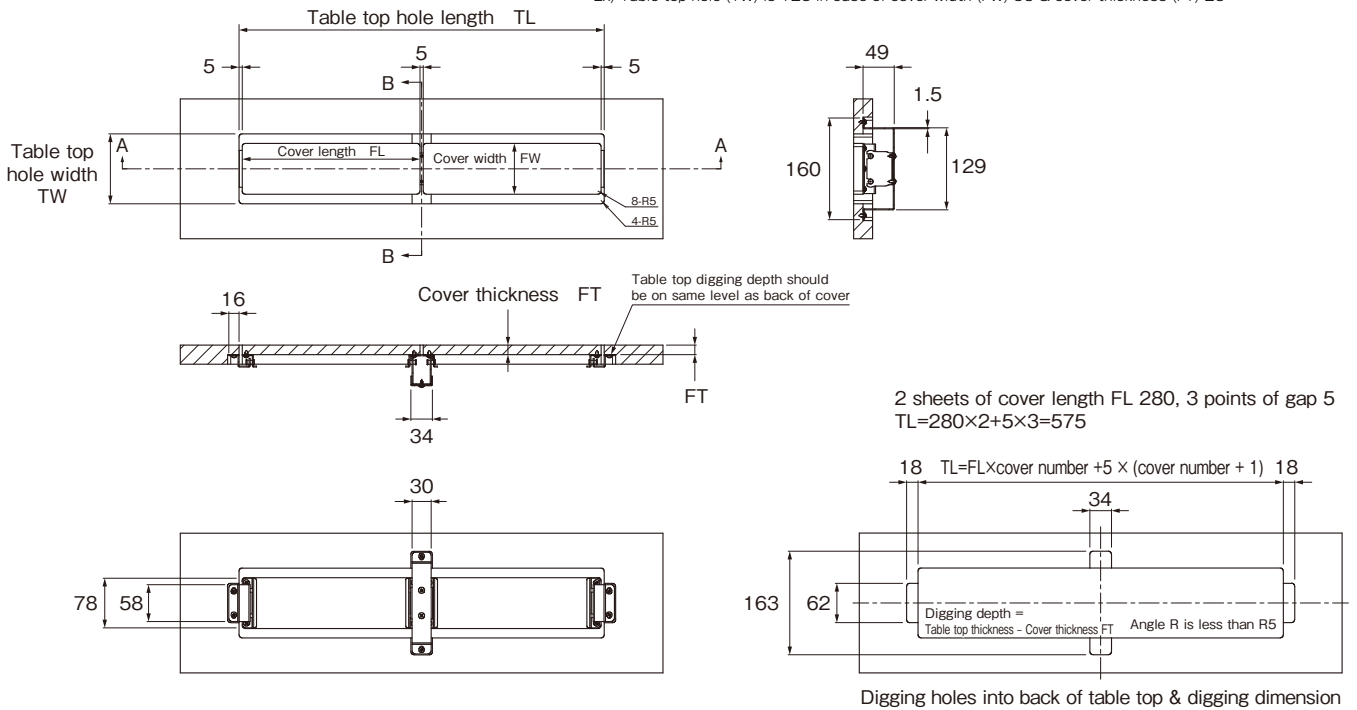


Chart of table top hole width by cover width (FW) & thickness (FT)

Cover width FW	table top hole width TW(FT=15)	table top hole width TW(FT=20)	table top hole width TW(FT=25)
80	110 ~ 125	120 ~ 125	125
90	120 ~ 125	125	-
100	125	-	-

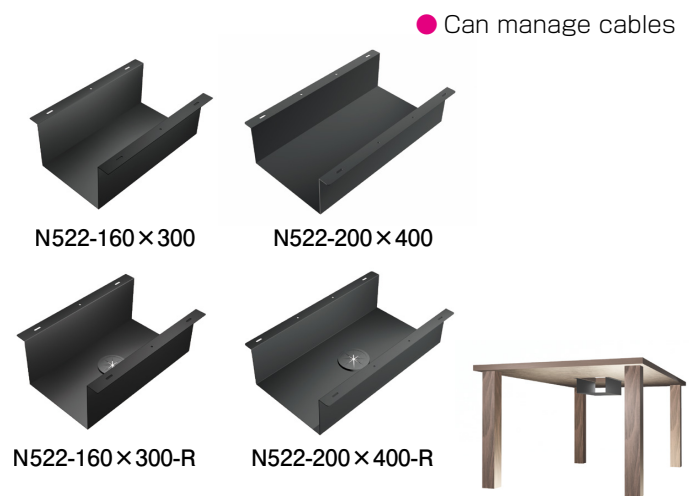
Ex) Table top hole (TW) is 125 in case of cover width (FW) 90 & cover thickness (FT) 20



N425 Cable management brush



N522 Cable tray



※ Please ask the person in charge for detail.

KOJIMA METAL FITTING CORPORATION

Head office 3-4-1 Motoasakusa, Taito-ku, Tokyo 111-0041, Japan

TEL +81-3-3843-3141 FAX +81-3-3843-3144

Kasukabe branch 1-26-20 Kasukabehigashi, Kasukabe-shi, Saitama 344-0062, Japan

TEL +81-48-760-3881 FAX +81-48-760-3883

✉ kanamono@kojima-mf.co.jp

