

B573 Surface attached adjuster felf type PAT.P

Adjuster cap



B573-25-WH



B573-25-BL

Adjuster seat

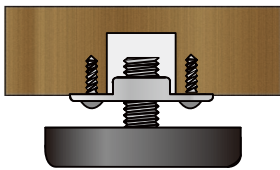


- Hard to scratch contact area because of felt
- Imposition makes unnecessary to process into wooden part
- Size is $\phi 25$. It's possible to install thin and small surface such table legs
- Installation is easy. Even if it needs an adjuster, it's possible to install with only a driver.
- Superior material being durable for low temperature, so it's not broken easily
- Easy to turn because it has knurling
- Adjustment width is 5mm
- Recommended screw/round screw for wood $\phi 3.5$, Pan head screw $\phi 3.5$
- Indoor use
- Finishing/ White•Black
- Material/ POM
- Applicable floor material/P tile, flooring
- ※ Load capacity is static load Caution: It might happen to be broken if it gets shock within its load capacity
- Please refrain to use things such as a chair or sofa expecting shock When you use, use in a tightened state a cap

Save time to work!!

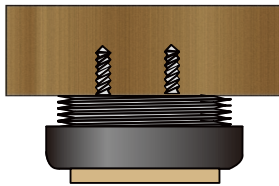
Usual item (current)

Necessary to process of wood



B573

Fix with screw directly



Specification dimension

Unit : mm

Product number	Specification	Load capacity (kg)	Quantity
B573-25-WH	White	150	240
B573-25-BL	Black	-	
B573-25-PL	WH/BL (seat)	-	
B573-25-CP	WH/BL (cap)	-	

If the movement of adjustment is hard, tighten a screw of adjustment seat so that it does not wobble.
Caution: Using an impact driver, if you screw too tightened, movement of adjustment might become hard.

Installation image

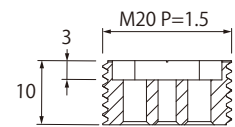
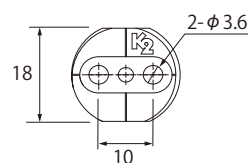
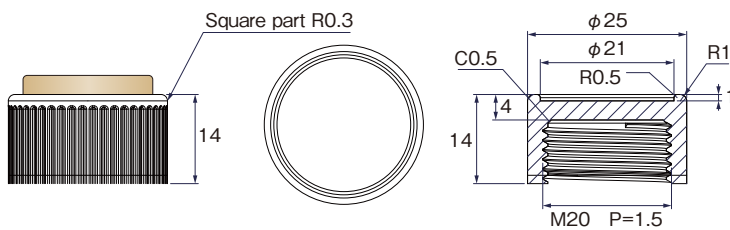
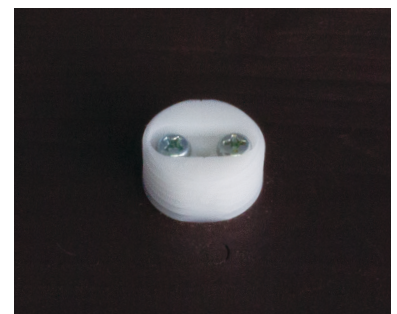


B573-25-WH



B573-25-BL

Installation image (Only adjust seat)



Recommended screw/round screw for wood $\phi 3.5$, pan head screw $\phi 3.5$

※Real total height becomes 17mm with felt

KOJIMA METAL FITTING CORPORATION

Head office 3-4-1 Motoasakusa, Taito-ku, Tokyo 111-0041, Japan
TEL +81-3-3843-3141 FAX +81-3-3843-3144

Kasukabe branch 1-26-20 Kasukabehigashi, Kasukabe-shi, Saitama 344-0062, Japan
TEL +81-48-760-3881 FAX +81-48-760-3883

✉ kanamono@kojima-mf.co.jp



B572 Surface attached adjuster cross hole type PAT.P

Adjuster cap



B572-25-WH



B572-25-BL

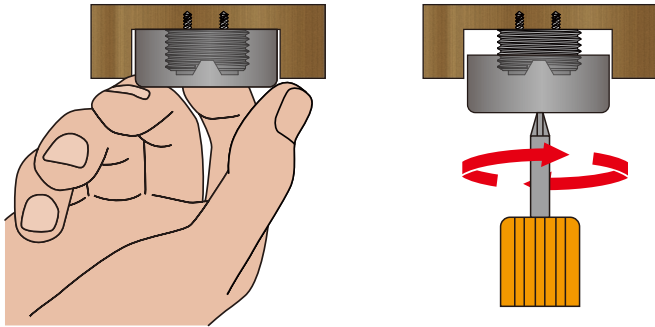
Adjuster seat



- Having cross hole makes it possible to use a driver at even small place not turning by finger
- Impositioning makes it unnecessary to process into wooden part
- Size is $\phi 25$ It's possible to install on various kinds of places
- Installation is easy. Even if it needs an adjuster, it's possible to install with only a driver.
- Superior material being durable for low temperature, so it's not broken easily
- Adjustment width 5mm
- Recommended screw/round screw for wood $\phi 3.5$, Pan head screw $\phi 3.5$
- Indoor use
- Finishing/ White•Black
- Material/ POM
- ※Load capacity is static load Caution: It might happen to be broken if it gets shock within its load capacity
- Please refrain to use things such as a chair or sofa expecting shock When you use, use in a tightened state a cap

New adjuster with cross hole!!

Can adjust using a driver, even where you can't turn with finger



Installation image



B572-25-WH



B572-25-BL

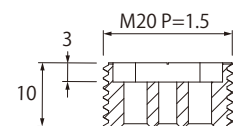
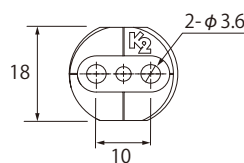
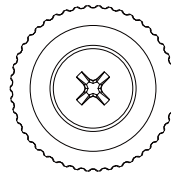
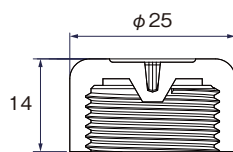
Installation image
(Only adjust seat)



Specification dimension			Unit : mm
Product number	Specification	Load capacity(kg)	Quantity
B572-25-WH	White	150	240
B572-25-BL	Black		
B572-25-PL	WH/BL (seat)	-	
B572-25-CP	WH/BL (cap)	-	

If the movement of adjustment is hard, tighten a screw of adjustment seat so that it does not wobble.
Caution: Using an impact driver, if you screw too tightened, movement of adjustment might become hard.

B572-25-WH / BL



Recommended screw/round wood screw $\phi 3.5$, pan head screw $\phi 3.5$

Kojima METAL FITTING CORPORATION

Head office 3-4-1 Motoasakusa, Taito-ku, Tokyo 111-0041, Japan
TEL +81-3-3843-3141 FAX +81-3-3843-3144

Kasukabe branch 1-26-20 Kasukabehigashi, Kasukabe-shi, Saitama 344-0062, Japan
TEL +81-48-760-3881 FAX +81-48-760-3883

✉ kanamono@kojima-mf.co.jp

