

B571 Surface attached adjuster PAT.P

Adjuster cap



B571-40-BL



B571-40-WH



B571-25-BL



B571-25-WH



B571-19-BL



B571-19-WH

Adjustment seat



B571-40-BL



B571-40-WH



B571-25-BL



B571-25-WH



B571-19-BL



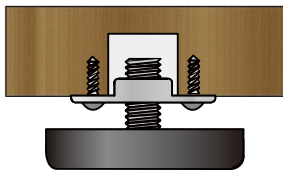
B571-19-WH

- Processing the wooden plate is unnecessary because of surface attachment
- 3 sizes with $\phi 19/\phi 25/\phi 40$
 - Available to install on various kinds of small places such as table legs on edge (etc. 20mm)
- Easy installation. Even if needs an adjuster suddenly, can install with only a driver
- Not broken easily even in cold place, because it's made of cold-resistance material
- Adjustment range is 5mm
- Usage for inside
- Color/White·black
- Material/POM
- *Load capacity is static load. Having dropping or shocking within its load capacity, it might happen to be broken. Please be careful!
- Refrain from using for such chairs and sofas expecting shocks. In case of using them, use in tighten the screw.
- *40 ϕ has knurling

Save time to work!!

Usual products (Current situation)

Necessary to process the wooden part



B571

Fix with screw directly



Specification dimension

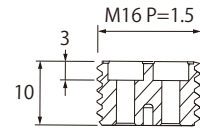
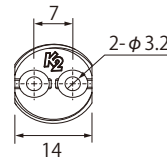
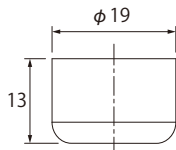
Unit : mm

Product number	Specification	Load capacity	Quantity
B571-19-WH	White	100	360
B571-19-BL	Black		
B571-25-WH	White	150	240
B571-25-BL	Black		
B571-40-WH	White	200	120
B571-40-BL	Black		

If the movement of adjustment is hard, tighten a screw of adjustment seat so that it does not wobble.

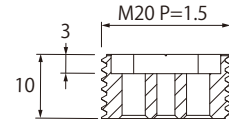
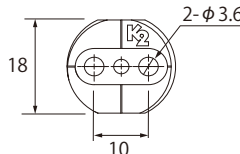
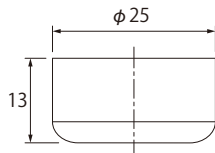
Caution: Using an impact driver, if you screw too tightened, movement of adjustment might become hard.

B571-19-BL / WH



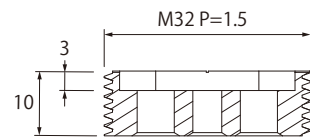
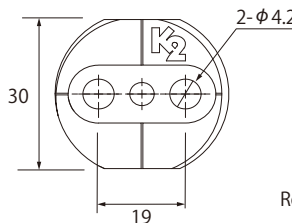
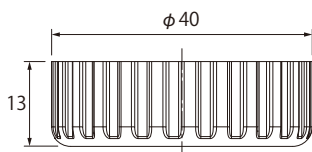
Recommended screw/ Round wooden screw $\phi 3.1$

B571-25-BL / WH



Recommended screw
Round wooden screw $\phi 3.5$, pan head screw $\phi 3.5$

B571-40-BL / WH



Recommended screw
Round wooden screw $\phi 4.1$, pan head screw $\phi 4.0$

Kojima METAL FITTING CORPORATION

Head office 3-4-1 Motoasakusa, Taito-ku, Tokyo 111-0041, Japan
TEL +81-3-3843-3141 FAX +81-3-3843-3144

Kasukabe branch 1-26-20 Kasukabehigashi, Kasukabe-shi, Saitama 344-0062, Japan
TEL +81-48-760-3881 FAX +81-48-760-3883

✉ kanamono@kojima-mf.co.jp

