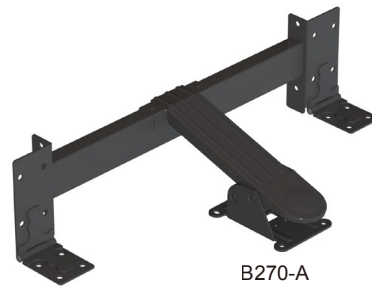


# B270 Metal Fitting Legs with locking system

PAT.P



- The metal fitting can be steady locked both when the legs of the table are standing or folded.
- The metal fitting is sturdy and safe enough even if the table is shaken or accidentally hit.
- Easy operate the metal fitting with a little force.
- Easy installation.

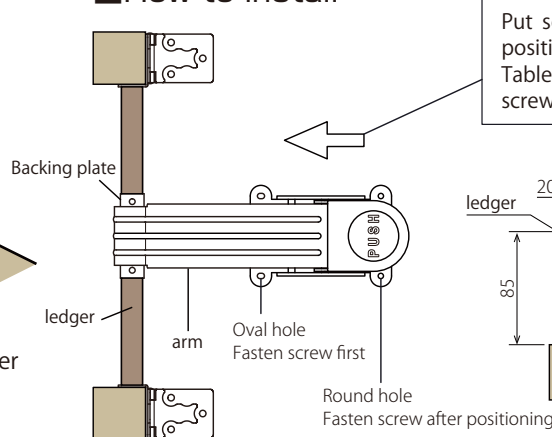
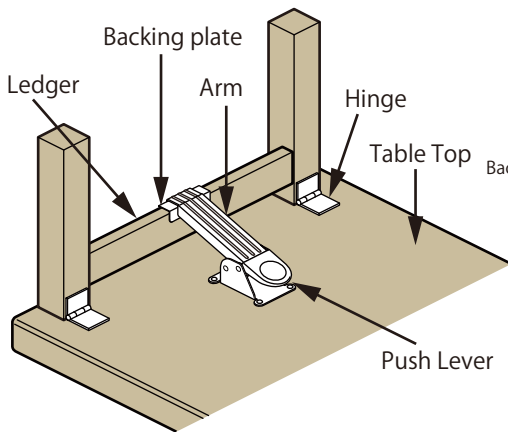


B270-H700

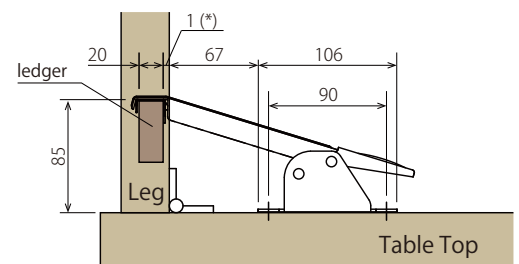
B270-A



## How to install



Put screws in oval holes side first, decide the position not to put a space between "Arm" and "Table top" and fix the round hole side using screws.

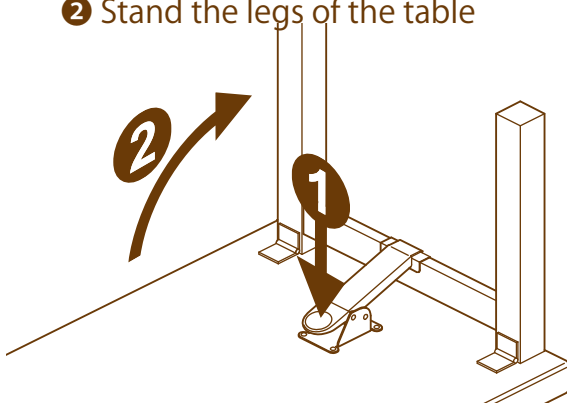


Hight from Table Top to ledger: 85mm  
Width of ledger: 20 mm  
\*Offset 1mm from leg to ledger

## To stand the legs of the table



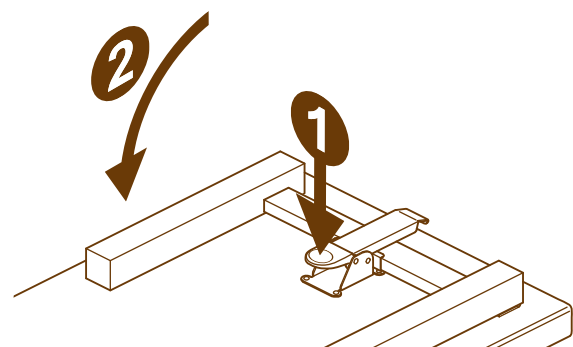
- 1 While pressing the "Push Lever"
- 2 Stand the legs of the table



## To fold the legs of the table



- 1 While pressing the "Push Lever"
- 2 Fold the legs of the table inward



## B270-A Metal Fitting Legs with locking system



- Material/ Steel
  - Finishing/ Black paint
  - Recommended screw/Body: Truss, Pan head, 6φ
  - Backing plate: Pan head, 3φ
  - Per case/20 sets (1 table needs 1 set)
  - ※ Recommended Table Top width: within 600mm, Recommended leg thickness: 55 ~75mm
  - ※ The stickers of instruction manual are included.
  - ※ Use more than 2 sets for the Table Top more than 600mm.
- Ask the sales for more detail information.

Table Top  
H300m/m  
Maximum

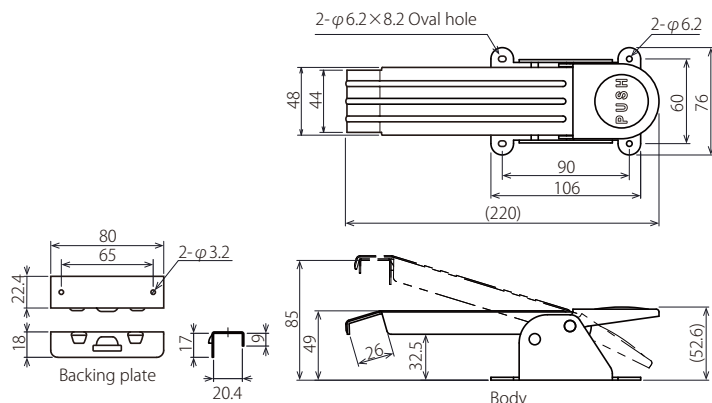
※ In case of using only B270-A

In case of combination use of B270-A and F138

Table Top  
H700m/m  
Maximum

※ In case of combination use of B270-A and B270-H700

In case of combination use of B270-A and F137

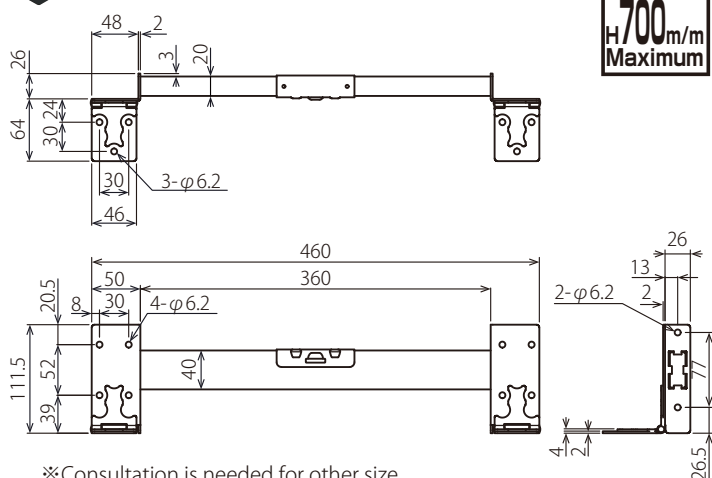


## B270-H700 Ledger with hinge



- Unnecessary to install ledger
- Stronger than wooden ledger
- Material/Steel
- Finishing/Black paint
- Recommended screw/ Truss, Pan head screw, 6φ
- Per case/10 sets (1 table needs 1 set)

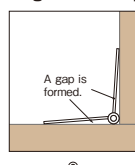
Table Top  
H700m/m  
Maximum



※ Consultation is needed for other size

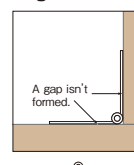
## Features of F137 and F138

Hinge with back push



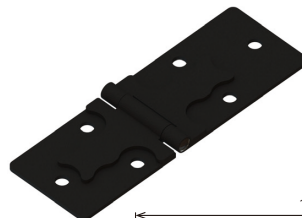
A gap is formed between screw and wood  
A gap between screw and wood causes deformation of a hinge when you screw and use. It consequently happens to wobble.

Hinge without back push (F137, F138)



A gap isn't formed between hinge and wood.  
Deformation doesn't happen when you screw or use, because there isn't a gap between a hinge and wood.  
※ Can tighten a screw

## F137-46-BL Enhanced version landscape hinge (old part number B270-H)



- Strong hinge for long legs
- Material/Steel
- Finishing/Black paint
- Recommended screw/ Truss, pan head screw 6φ
- Per case/24 pcs.

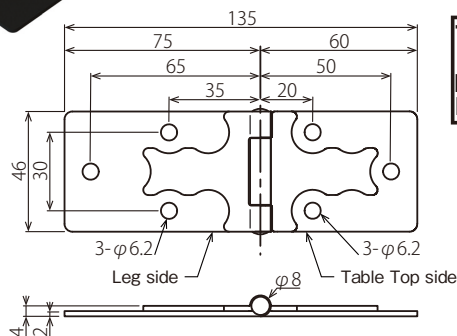


Table Top  
H700m/m  
Maximum

## F138-38-BL Landscape hinge without back push (old part number B271)



- Can also use for other metal fittings of foldable legs beside of B270, B200, B205.
- Material/Steel
- Finishing/Black paint
- Recommended screw/ Plate screw, 3.5φ
- Per case/ 24 pcs.

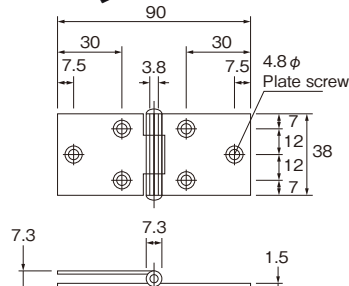
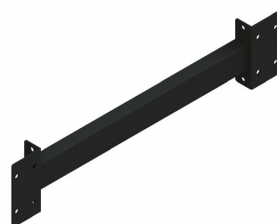
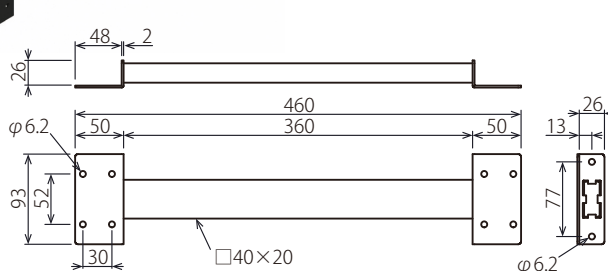


Table Top  
H300m/m  
Maximum

## B270-Y Reinforcement Ledger



- Use to reinforce long legs
- Material/Steel
- Finishing/ Black paint
- Recommended screw/ Truss, pan head screw, 6φ
- Per case/10 sets (1 table needs 1 set)



**KOJIMA** METAL FITTING CORPORATION

Head office

3-4-1 Motoasakusa, Taito-ku, Tokyo 111-0041, Japan

TEL +81-3-3843-3141 FAX +81-3-3843-3144

Kasukabe branch

1-26-20 Kasukabehigashi, Kasukabe-shi, Saitama 344-0062, Japan

TEL +81-48-760-3881 FAX +81-48-760-3883

✉ kanamono@kojima-mf.co.jp

