

B213 Metal Fitting to fold legs PAT.P



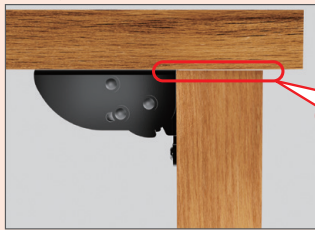
- Metal fitting to fold and lock table legs one by one.
 - Available to operate easily by handling a lever.
 - When you use or stock a table, legs can be locked.
 - Unlocking state is kept by memory function, if you push the locking release lever when opening and closing the legs.
- Safety design to avoid finger pinch because by not putting your hand on when opening and closing by this function.

● Installing on a plate, it is unnecessary to engrave on a table top or a leg.
 Caution: When you unlock by the lever, it happens that a leg falls suddenly, so be sure to start to operate the lever keeping your hand on the leg.

- Finishing/Black baked paint ● Material/steel
- Recommended screws/ ϕ 5.0, pan, truss
- Quantity: 40 pcs.
- Recommended table top size: width is up to 900mm, length is up to 1,800mm
- Recommended leg thickness: 60~75mm square

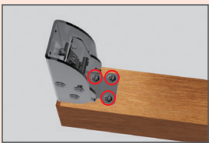
Caution!!

Please put about 0.1mm gap between table and leg. Installing without any gap, lock system doesn't work when you stand a leg.



About 0.1mm gap

1

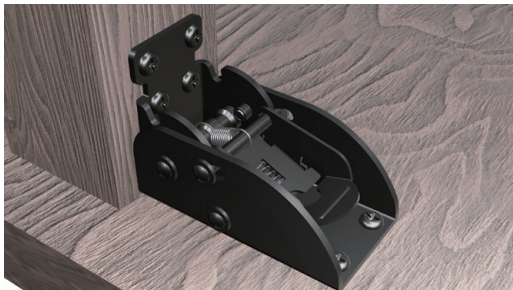
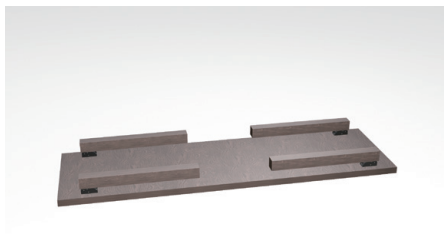
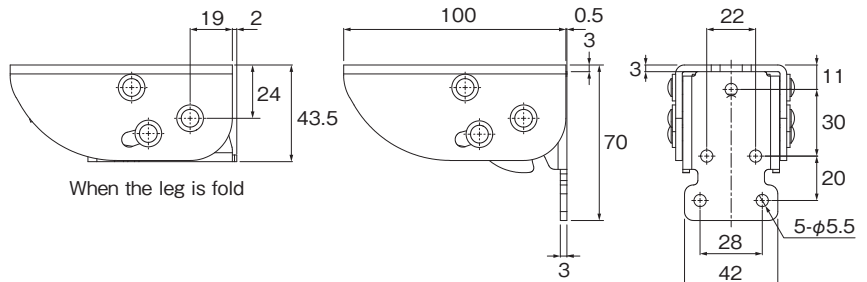
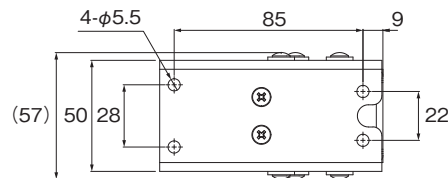


Install a leg to B213 on a flat place

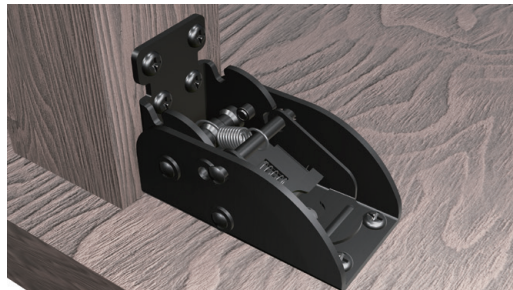
2



Fix the red circle part with a screw in the folded state



When it is locked by a lever



When it is unlocked by a lever

