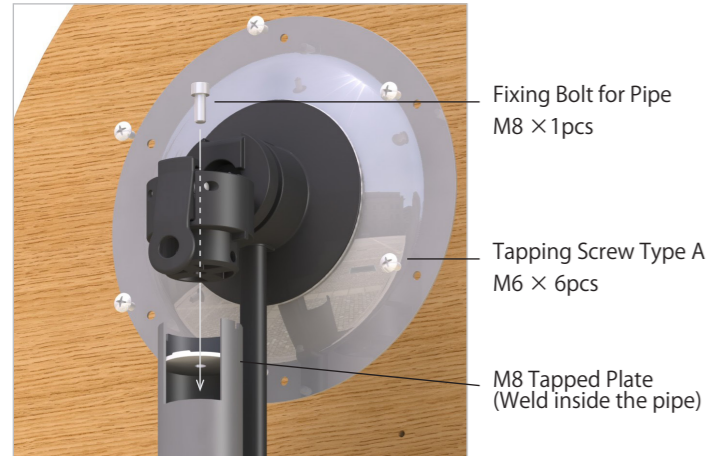
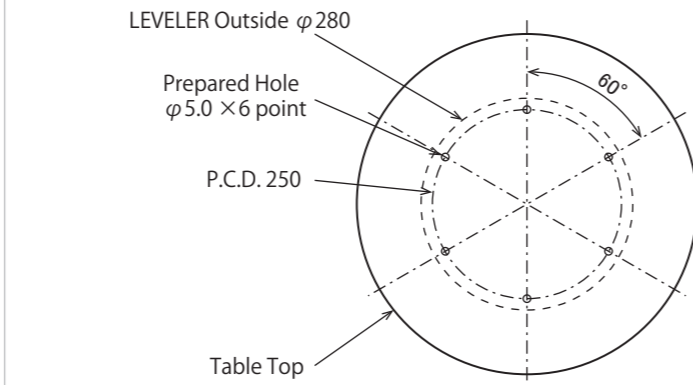


## Outline for assembly

### Foldable Type - A system



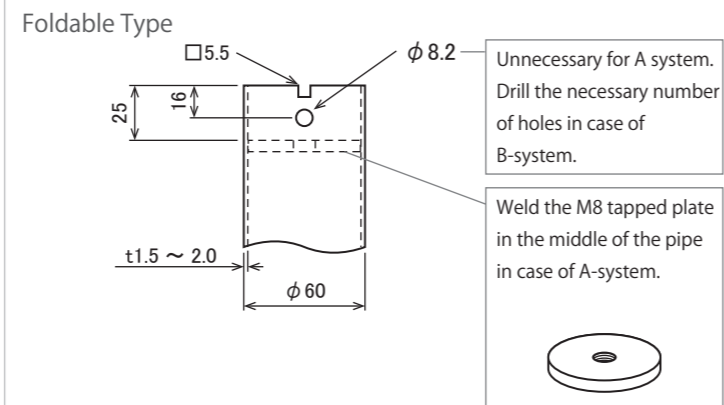
### Machining drawing for Table Top



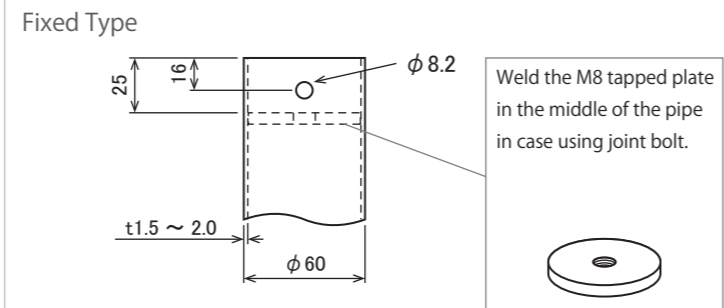
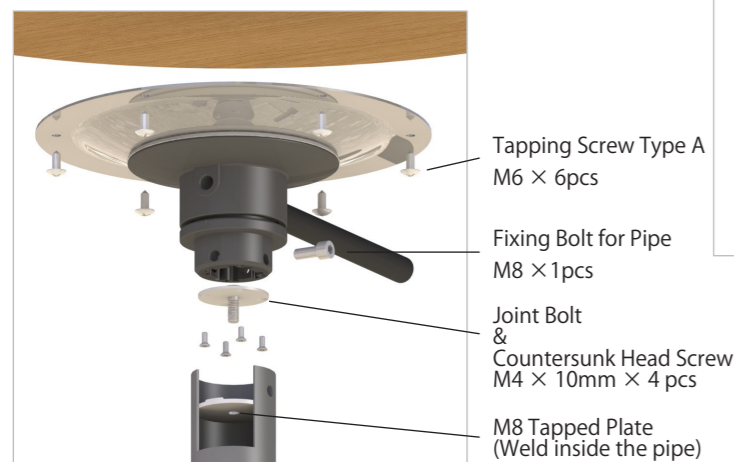
### Foldable Type - B system



### Machining drawing for Pipe



### Fixed Type



Use 2 to 4 fixing bolts if not using these parts.

Please refer to the separate volume "Delivery Specification" about shapes of each part and mounting dimensions and others.

**Kojima** METAL FITTING CORPORATION  
KOJIMA IS A CORPORATION THAT OFFERS INNOVATIVE PRODUCTS THAT PROVIDES HIGH ECONOMY AND QUALITY.

Head office 3-4-1 Motoasakusa, Taito-ku, Tokyo 111-0041, Japan  
TEL +81-3-3843-3141 FAX +81-3-3843-3144

Kasukabe branch 1-26-20 Kasukabehigashi, Kasukabe-shi, Saitama 344-0062, Japan  
TEL +81-48-760-3881 FAX +81-48-760-3883

✉ kanamono@kojima-mf.co.jp



www.kojima-mf.co.jp



**KOJIMA**

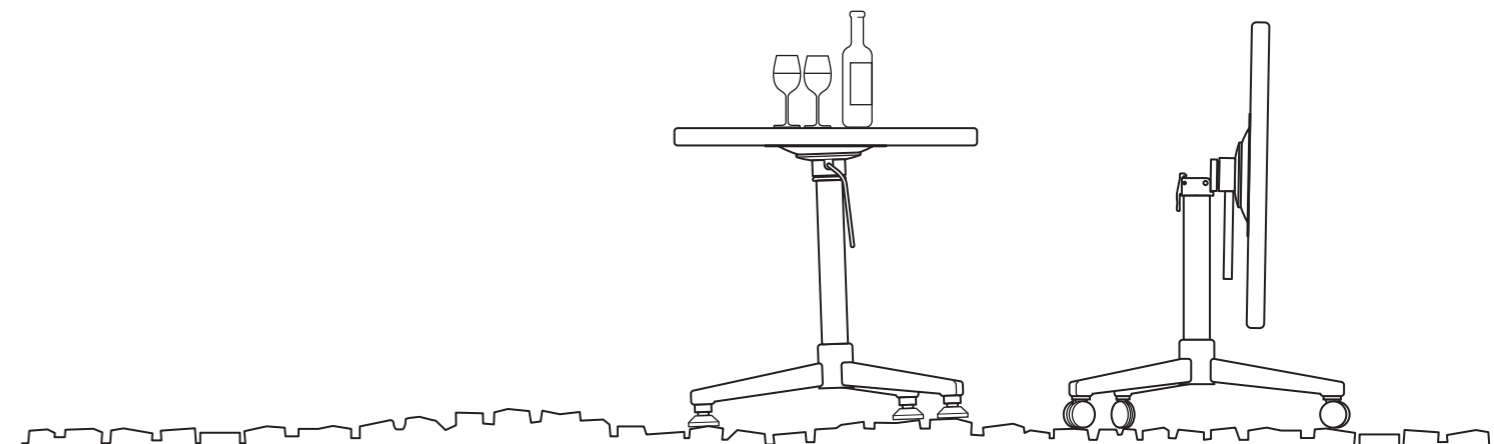
B135

# LEVELER



### LEVELER

- Proposal of new table system.
- Easy one step operation for leveling.
- Using casters makes moving quite easy.



## Proposal of new table system.

“B135 LEVELER” is a metal fitting which can level the table top easily only by operating the lever. It is possible to keep leveling the table top easily even on the uneven floor such as stone paving using highly safety 3 legs.

Foldable Type has a hinge to storage by folding the table top compactly.



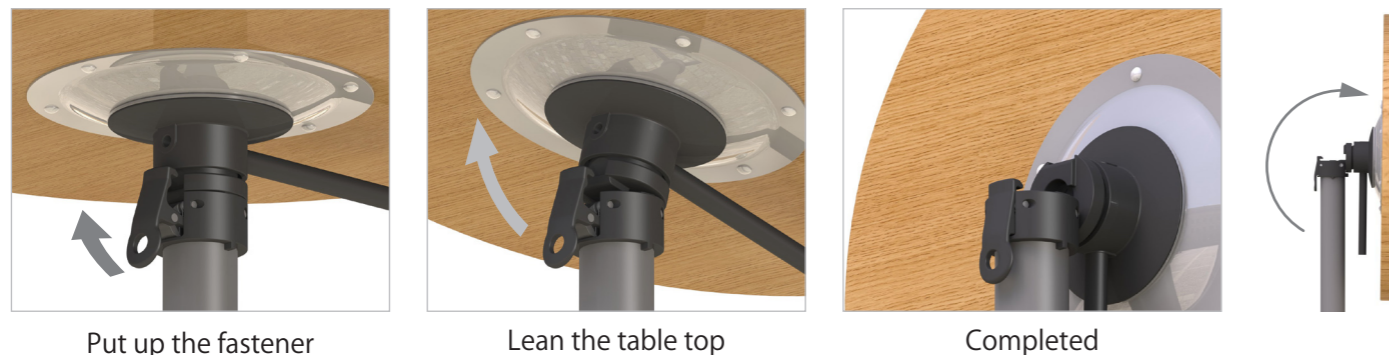
\*φ 76 pipe also adjusts to B135 by using “Spacer/B135SP” sold separately.

### How to operate inclination of the table top.

1. Loosen by turning the lever
2. Level the table top
3. Tighten by turning the lever in the opposite direction



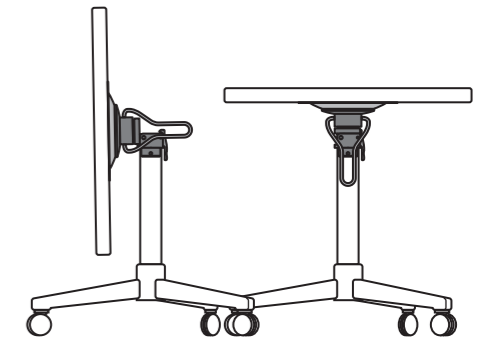
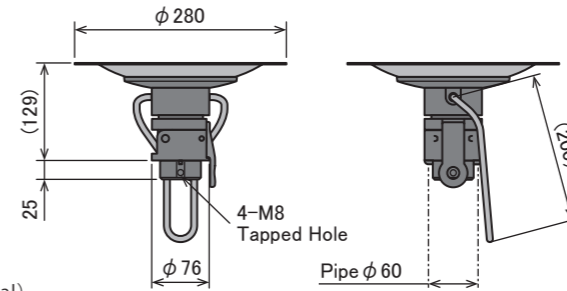
### How to fold the table top <Foldable type>



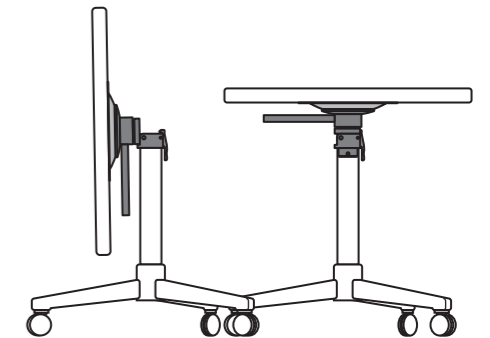
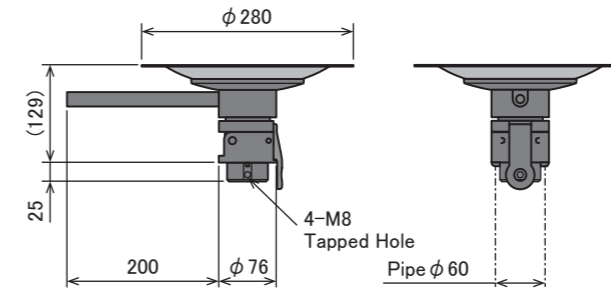
\*Operate the fastener by one hand holding the table top by the other hand.

### Foldable Wire Handle B135-LVR-W B135-LVR-W-SUS

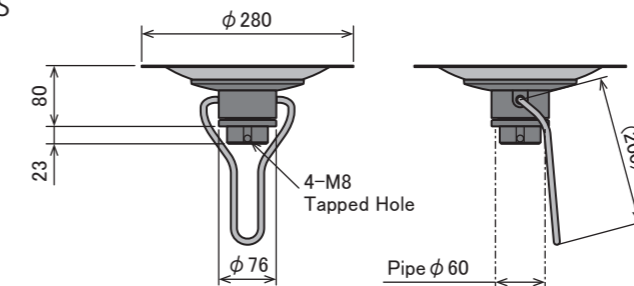
Material  
MainParts : ADC  
TableTopBracket :  
Chromium steel sheet  
or SUS304  
(All above are the same material)



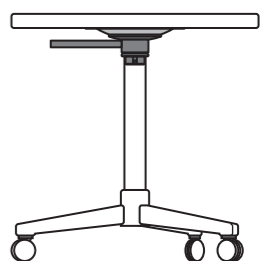
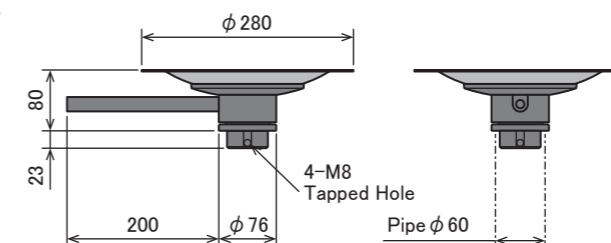
### Foldable Bar Handle B135-LVR-B B135-LVR-B-SUS



### Fixed Wire Handle B135-LVN-W B135-LVN-W-SUS



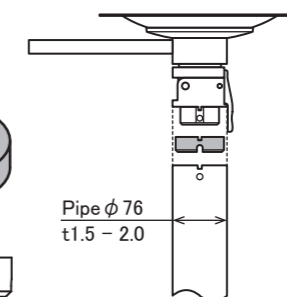
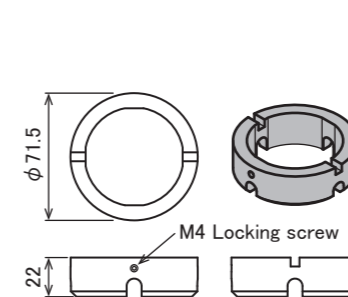
### Fixed Bar Handle B135-LVN-B B135-LVN-B-SUS



### Optional Parts

#### Spacer B135-SP

Use in case assemble 76 outer diameter pipes



#### Joint Bolt <for Fixed type> B135-JB

This is a metal fitting which you install the fixed type easily. Please don't hesitate to ask us in detail.

